

Appendix 7a: Mental Health Update March 2016

**Helen Lammond-Smith
Blackpool CCG**



Current Provision

- **Blackpool Teaching Hospitals FT/Council**
- **CAMHS, Primary Care Mental Health , including IAPT, social inclusion, perinatal, CPNs, social workers**
- **Lancashire Care Foundation NHS Trust/Council**
- **Complex care and Treatment, EIS, Eating disorders, In patients, secure services, Older adult Mental Health, memory assessment**

CAMHS Transformational Plan

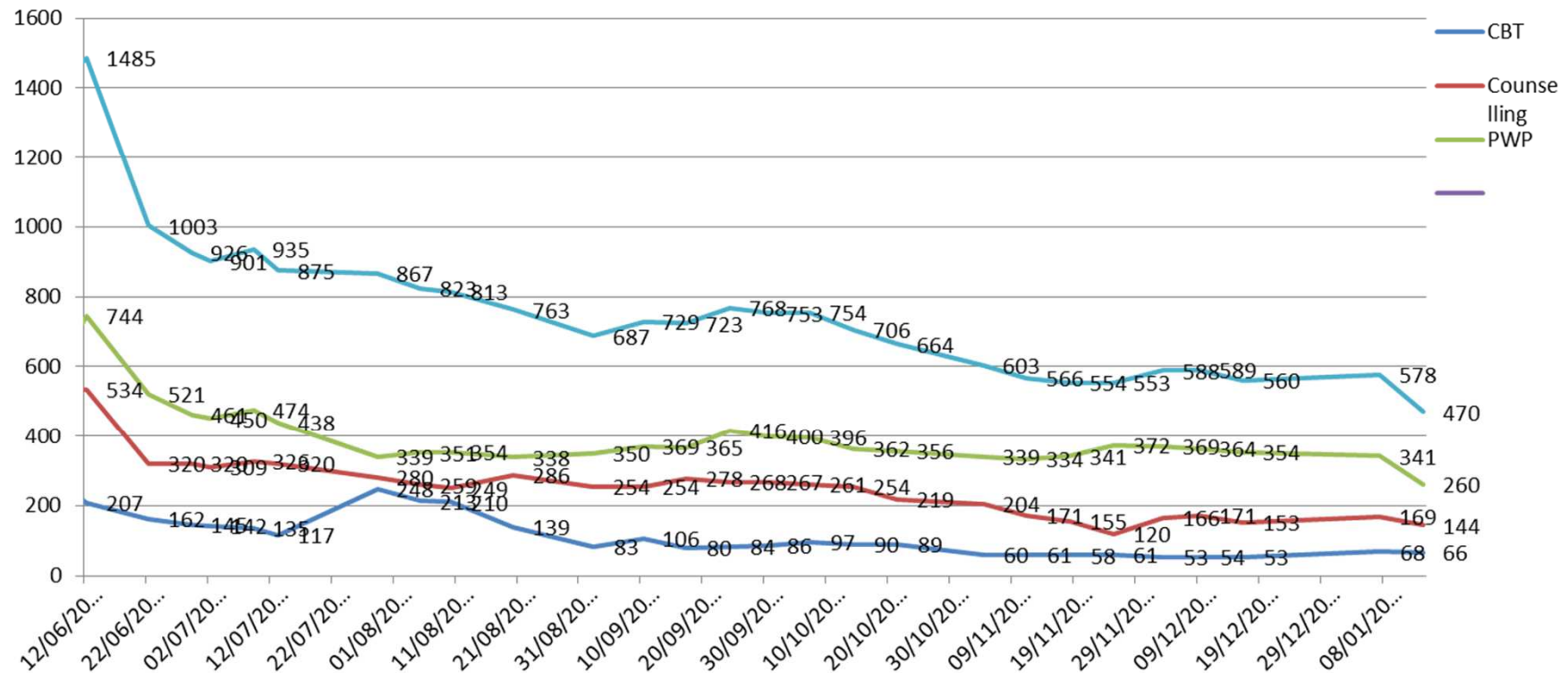
- All partners to sign up to the plan, led by CCG
- H&WBB to own, govern & sign the plan off for the locality
- Plan submission date 16th October 2015
- Further funding available for Blackpool following plan submission to be spent by 1st April 2016
- Work underway, camhs workers in schools etc
- Mandated spend areas: Eating disorders - Peri-natal MH - CAMHS integrated model & links to schools - CYP IAPT

IAPT – April 2016 Targets

- **Waiting time standards for people entering an IAPT course of treatment by April 2016**
 - 75% of all referrals to be seen in 6 weeks
 - 95% of all referrals to be seen in 18 weeks
 - 15% access rate, 50% recovery rate
- **April 2015 – c.1500 cases waiting up to 10 months**
- **CCG funding agreed**
- **Successful waiting list initiative bid from NHS England**
- **Action plan and Programme Board now in place**

Improving Access to Psychological Therapies (IAPT): Highlight Report to Blackpool CCG – 15 January 2016

No. of clients waiting for first assessment and first treatment by modality as at 140116

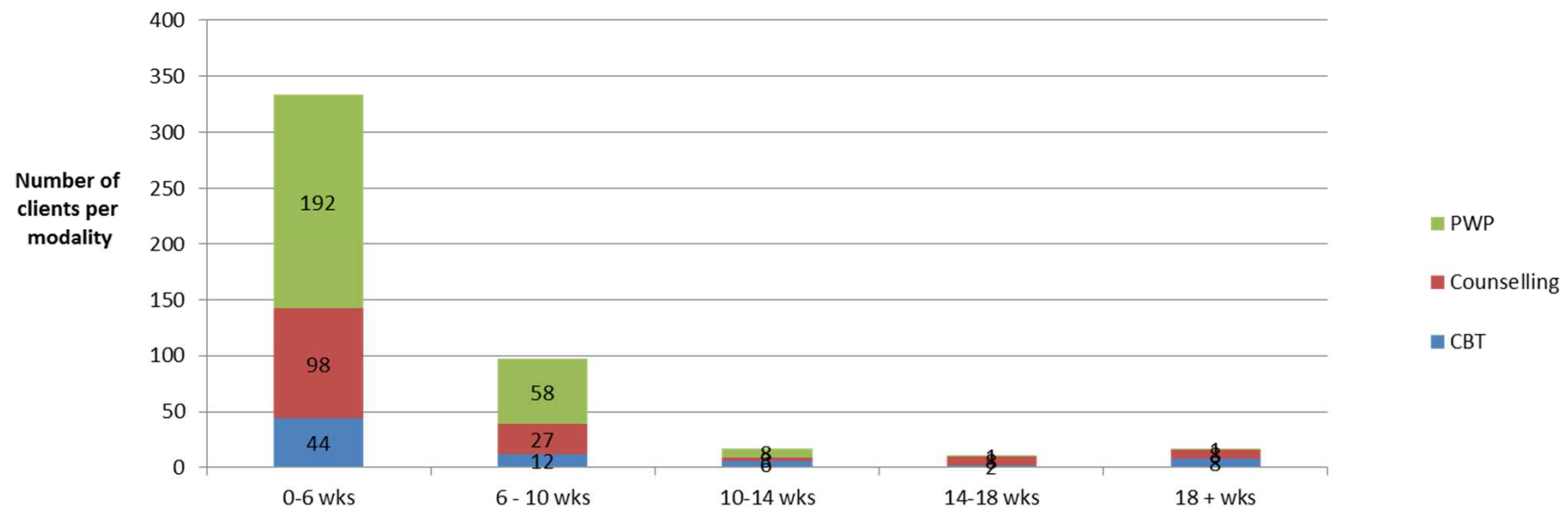


Continued data cleansing and corrections following the writing of the migration script has resulted in both the numbers of waiters and numbers on the weekly movements report to increase. Testing and checking will continue on the migration data in the short terms and may result in historical data fluctuating slightly week on week whilst any errors are corrected_AK_03.12.15



Improving Access to Psychological Therapies (IAPT): Highlight Report to Blackpool CCG – 15 January 2016

Number of clients per modality by number of waiting weeks as at 14/01/2016



Figures may not sum with total waiters due to total figures being used in this chart which do not include those waiting to step up or step down into other services.

In-patient Bed Reduction

- Harbour opened 2015, 156 beds, discussion ongoing on other sites in Blackburn and Central Lancs
- Recent high numbers of out of area placements
- LCFT recovery plan, bed management, telecoms
- Transition Oversight Group
- Additional PICU beds at Ormskirk
- 2 x 15 bedded assessment wards and a Clinical Decision Unit in East Lancashire to alleviate pressure

Adult Mental Health Service Redesign Proposal

- To be implemented by April 2016
- Alliance board in place LCFT/BTH/BC/CCG
- Access and Treatment Team- ongoing support
- Move IAPT to sit outside CMHT – referral pathway
- Develop Community Mental Health Teams with staff seeing all patients, mild to moderate and severe mental illness.
- Two teams across Blackpool linked to neighbourhood configuration
- Formal Alliance Management agreements in place between providers



Older Adult Mental Health

- **LCFT , Greater focus on Dementia**
- **Lancashire wide redesign to improve diagnostic gap – CCG target 67% (89%)**
- **Reduce Memory Assessment times to 70% seen within 6 week wait**
- **Memory screening ongoing with voluntary sector**

Memory Assessment Service (MAS) – seen within 6 weeks

CCG	Number seen under 6 weeks	Total patients seen	%
NHS Blackburn with Darwen CCG	25	26	96%
NHS Blackpool CCG	49	52	94%
NHS Chorley and South Ribble CCG	23	26	88%
NHS East Lancashire CCG	37	46	80%
NHS Fylde & Wyre CCG	47	53	89%
NHS Greater Preston CCG	28	29	97%
NHS Lancashire North CCG	18	22	82%
NHS West Lancashire CCG	9	40	23%
Out of area	1	4	25%
Grand Total	237	298	80%

For all people during December, 80% were seen within 6 weeks

297 people were seen for the diagnostic pathway during December.

The target of 70% has been maintained for 11 consecutive months: From February to June 2015, compliance was reported against a 4 week referral to assessment target and from July, we have been reporting against a 6 week target.

West Lancashire position has improved slightly given that long waits have now been addressed. The management team will continue to monitor the waiting time in West Lancashire given the disparity.

Any questions?

